

ORANGE SPEEL

ASPE Chapter 3 Orange County News Letter No. 36: December 2020

The logo for ASPE (Association of Professional Estimators) is displayed in white text on a dark blue square background.

President's Message

December 22, 2020

A message from your president

As things continue with COVID, I hope that all of you are getting along as best as possible.

A Virtual meeting was held in November with the topic being Bluebeam Revu for Estimating. It was a very beneficial discussion with on-line examples of how to review PDF drawings, perform area calculations, detailed take-off quantities, item counts and then download everything to Excel Reports. We had over 50 people in attendance. Thank-you Danielle Leyva for sponsoring this event.

January's upcoming meeting will also be virtual. The topic is about taking virtual photographs and videos at construction jobsites and recording the information utilizing a new software developed by OpenSpace.com. This meeting is being sponsored by Dan Luckhardt. Look for the upcoming flier for more details about this event to be held in early January.

All of the virtual chapter meetings will continue to be complementary. We are planning future virtual meetings for February and March. PDU credits be available for those CPE's looking to maintain their certification requirements.

This month's newsletter features a new section outlining bio information on your Board Members.

If anyone wants to become a Board Member, we are looking for volunteers. The more people that can help out, the better our Chapter will become. PDU credits are also available for being on the Board.

I look forward to seeing everyone at the next virtual meeting.

Wishing everyone a healthy, happy and successful New Year!

Best Regards,

Dan Schottlander, CPE ASPE Chapter 3 President.



In this Issue:

- Letter from the President
- Upcoming Virtual Meetings
- Regional Meeting Report
- Meet the Board
- Virtual Meeting Reports

"Professional Estimators and those in training shall not engage in the practice of bid peddling as defined by this code. This is a breach of moral and ethical standards, and a member of this society shall not enter into this practice"

- Canon # 7

MEET THE BOARD

DAN SCHOTTLANDER - CPE: PRESIDENT:

Dan has been with ASPE for over 15 years. He is a past president of the Chapter from 2007 to 2009.

Currently Dan is the Chief Estimator for Integrated Engineering Management (IEM). He mostly does engineering estimates, budgetary, design build, final construction, change orders and negotiations with Contractors.

Dan has construction engineering experience for over forty years. I graduated from the University of Washington with degrees in Architecture and Engineering. Dan started out as a field engineer, moved to project engineer, then a project manager, eventually crossing over from contracting to engineering. He has worked on many different types of projects from civil, industrial, military, commercial, environmental, transportation, and energy.



In his spare time, Dan enjoys playing golf, home winemaking, driving on PCH and taking walks along the beach.

DANIELLE LEYVA - VICE PRESIDENT:



Danielle has been with ASPE for almost fifteen years with the Orange County and Inland Empire Chapters. She wants to grow the OC chapter and continue to help put together Virtual meetings until we can meet in person again.

Danielle has over fifteen years of experience in cost estimating. First at an architecture firm, then with a cost consultancy and now with a general contractor.

Currently, Danielle is employed by Swinerton Builders as a Senior Estimator focusing on Design Build projects in the Education (K-13) sector. She enjoys early conceptual estimating in ensuring that a project's scope is achievable for the budget available and keeping that project on budget through design to construction.

Danielle holds a B.A. in Business Administration, from CSU, Fullerton; A Construction Technology Certificate from Norco College, Riverside Community College District. She is an Associate DBIA and a LEED Accredited Professional.

Danielle enjoys chasing sunsets, walks on the beach with her family (and dogs), and free diving warm bodies of water near and far.

ASOKA SELLAHEWA - CPE: TREASURER

Asoka joined the ASPE in 1998 in San Diego. He obtained his CPE in May 2000. He has been with Orange County Chapter #3 since 2005 and for the last five years served on the Board as treasurer. Asoka is also a member of Asian American Architects/ Engineers Association Southern California chapter.

Asoka is the Principal of EQS Consultants which he found in 2011. He has over 36 years of experience providing professional construction management support services to the design and construction industry as a Quantity Surveyor / Estimator. His areas of expertise include conceptual estimating, design phase estimating, cost modeling, value engineering, and bench marking. His wide project experience includes aviation & transport, K-12 schools, higher education, hospitality, healthcare, residential, mixed-use commercial, infrastructure and theme park projects.

Asoka enjoys traveling, cooking and trying new foods. He is involved in the Sri Lankan community events locally and do fundraising for various charities supporting the needy.



BRYON BARKER - CPE: SECRETARY

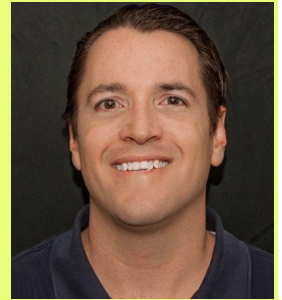
Bryon became a member of the ASPE in 2014.

He has more than 20 years experience in the construction industry specializing in the Civil disciplines

Currently Bryon is a Construction Manager with Murow Development Consultants .

Bryon holds a Bachelor of Science in Business from the University of Redlands.

Bryon is scuba certified.



DAN LUCKHARDT - CPE: DIRECTOR

Daniel has been an active member of ASPE since 1990. He joined San Diego chapter and came to Orange County some years ago.

Daniel Luckhardt has thirty years of experience within the field of construction cost estimating and construction management. He is passionate in understanding new technologies such as cost loaded models, net zero energy trends, and life cycle analytics. Daniel's professional experience primarily includes Pre-Construction Cost Estimating

Currently, Dan is employed by Swinerton Builders as a Senior Estimator, specializing in the mechanical, electrical, plumbing (MEP), and utility infrastructure disciplines. As an Adjunct Professor at the New School of Architecture + Design (NSA+D), Daniel has taught the CM 202 'Construction Estimating' course since 2011.

Daniel received his Bachelor of Science and his Master of Arts degrees in Industrial Education from Eastern Michigan University. He is also a two-time recipient of the 'Albert L. Vallin Estimator of the Year Award' from the San Diego Chapter

TROY THOMAS - DIRECTOR

Troy became a member of the ASPE in 2015.

He has 35 years experience in the construction industry in several disciplines including Public Works, Health Care, Commercial, Multi family, Hospitality, Food Service, Training Facilities, Retail and more.

Currently, He is working with Murow Development Consultants serving as Senior Vertical Construction Consultant in litigious and non litigious projects.

Troy graduated from UC Davis. Troy is also a member of CMAA and DBIA

He enjoys weight training, running, cycling, eating healthy, volunteering and mentoring.



MICHAEL MILLS - CPE: DIRECTOR

Michael has over twenty-five years of experience in cost estimating and cost management. He has spent his career on both the owner and contractor side.



Currently, Michael is with AECOM as Director of Estimating working on global projects. His primary focus of expertise is healthcare projects where he has spent the majority of his career.

Michael holds a BS Construction Management degree from Washington State University.

Michael plays various music instruments and used to be in a band.

November virtual meeting recap

The presentation was done by Lilian Magallanes, an Industry Alliances Manager at Bluebeam, Inc., where she leverages thirteen years of construction management and facilities experience to strengthen Bluebeam's industry relationships and nurture professional partnerships

Accurate takeoffs are essential for reducing costly errors and rework. Lilian demonstrated how to in Bluebeam Revu perform the following:

- Take quick, precise measurements
- Create and share custom measurement and markup tools
- Measure complex areas on your drawing with Dynamic Fill and take multiple measurements at once
- Use the Markups List to track totals and export your data

The presentation showed a powerful tool in the hands of a skillful operator.

Thank you Lilian

September virtual meeting recap

Vahid Balali, Sr. from Swinerton Construction was the presenter

Vahid also teaches at California State University Long Beach.

His presentation addressed BIM-based cost estimation (5D) and design-change issues during the preliminary design phase and leverages end-user satisfaction through the use of collaborative functions in a VR environment for material cost estimation.

He explained VR-based framework for interior finish material selection, incorporating both visual aesthetics and associated cost impacts and a systematic approach for converting building information models into interactive VR models.

Thank you Vahid for taking the time to educate us.

Upcoming Programs in 2021:

January 13 at 4:30 pm ZOOM meeting: Virtual recording of existing conditions” presented by Robert Shear of Open Space

February 10: TBD

March 10: TBD

April 14: TBD

Northwest / Southwest Regional Meeting - October 24, 2020

The Regional meetings are a great opportunity to earn CPU's fast. It is informative and a nice place to hook up with acquaintances.



The Fall Meeting on October 24, 2020 did not disappoint.

James Palecek from Palecek & Palecek, P.L.L.C. discussed "Contract language considerations as part of bid proposal and final contract" It was interesting and informative and good to learn about pitfalls to evade.

Gustavo Choto the Chapter 2 President hosted . He works for Join a collaboration software. His insights and technical knowledge proved very useful as he gave tips on virtual meeting presentations. Very important is to have a practice run beforehand to assure smooth flow and avoid embarrassing glitches.

Lorena Quintero gave a sparkly and energetic presentation on how to use Social Media as a marketing tool in the Chapter arena. It became clear that we as chapters need to embrace the modern trends are we will be left behind in obscurity.

The Governors meeting led by Larry Lucero, CPE and Chris Morton, FCPE closed out the days proceedings. It brought us up to speed of what's happening on Regional level and Melvin Cowen, CPE, National President shared the current affairs of the National Board of Directors

Article by Wil Beukman, CPE



2021 ESTIMATORS' SUMMIT SAN ANTONIO

SAVE THE DATE

AUGUST 25 - AUGUST 28

ASPE Online Education

ASPE offers a selection of Self-Paced and Instructor-Guided Online Education Classes. These online classes are designed as a great introduction to those individuals who are new to the estimating profession or provide a way to advance and grow your estimating career.

The Syllabus, available for each Class, provides information specific to the class, text book requirements, class fees and the registration information. [Visit ASPE National.org](http://VisitASPENational.org)

Instructor-Guided classes :

- 103 Construction Blueprint Reading
- 105 Estimating + Bidding 1
- 106 Estimating + Bidding 2
- 107 Construction Materials + Processes
- 109 Practical Applications of Civil Sitework
- 110 Civil Blueprint Reading + Materials
- 201S Leadership + Motivation
- 203P Risk Management + Problem Solving
- 205T Planning + Scheduling

Self-Paced Classes are open for enrollment

- o 099 Introduction to Concrete * *NEW*
- o 100 Introduction to Construction
- o 101 Introduction to Construction Estimating
- o 102 Essential Construction Math

More Instructor-Guided classes :

- 206T Construction Productivity + Cost Management
- 308 Construction Project Management
- 310 Practical Applications of Construction



THE ABBEY of the DORMITION in Jerusalem